

[Top](#)

Newsletter 02/13/2022

[Back to Contents](#)  
[A printable PDF of this article is available here.](#)

## Introducing the Pretty Darn Good Intel Installer

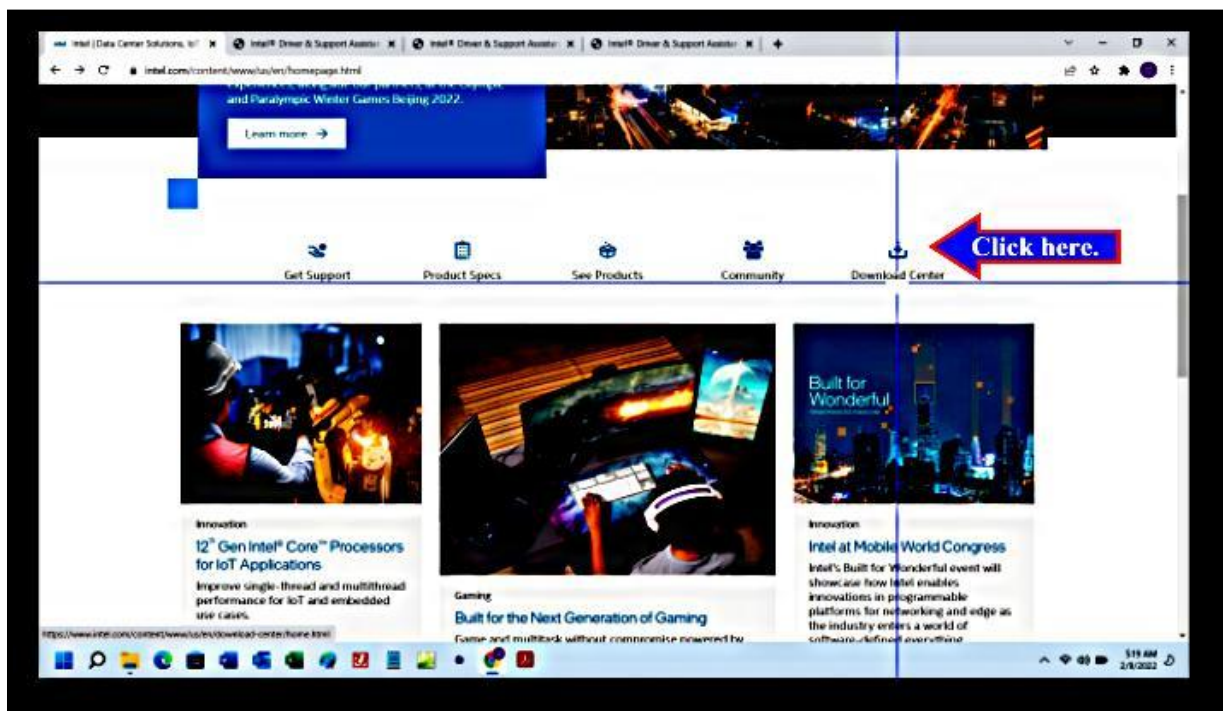
The goal for us mere mortals when it comes to our part in Zero Trust computing is to keep our software up to date. That means not only our operating systems and applications, but the behind the scenes software that also runs continually, and may also have their own vulnerabilities. On such software category is **DEVICE DRIVERS**. Windows Update does an OK job of keeping device drivers up to date, especially on newer machines, but, as you will see, Windows Update doesn't always precisely hit the device driver target.

The HP Support Assistant has its own scan for and install device driver function for HP branded computers. Here the inexperienced need to move carefully before they try to fix things. The HP installer will offer a **BIOS UPDATE**, which is a whole different breed of cat than what is discussed herein, along with the drivers. So it helps to know something about what might be offered by the HP installer beforehand.

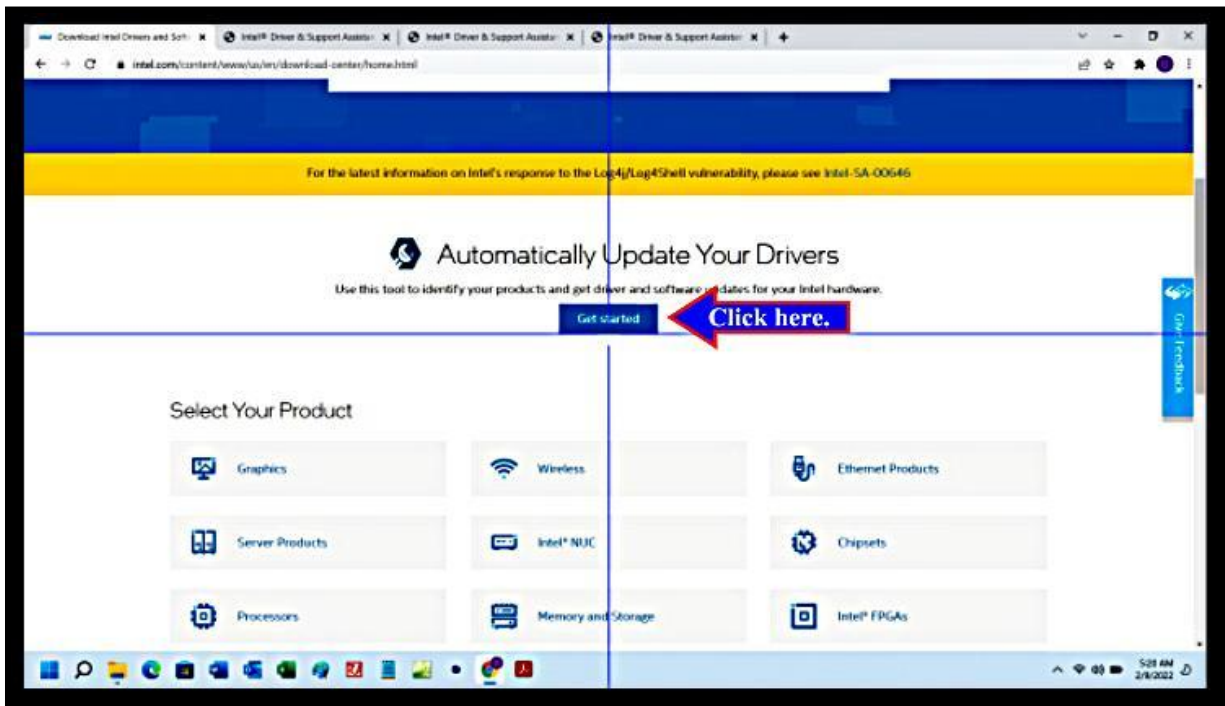
For most users, the Dell Computer installer is almost useless. The installer will effectively scan the system, yes. But the results are often less than helpful. The Dell installer will offer several different possible drivers for what possible device might be on the PC scanned. Also, the Dell installer creates **ZIP FILES** in a new folder off the root drive [C:/] labeled Dell Computer, or something close.. This new folder with your possible new device driver software has been given a serial number folder name that corresponds with the filename you downloaded, which you did not write down beforehand. The user then must find the right folder within the new folder and then go negotiate the whole zip file experience. What rapidly becomes quite demoralizing is once you have done this whole dance, and managed to unzip the zipped folder, and then find the right \*.exe file to start the installer — and its the wrong driver. Mmmm... Good times boys and girls. Good times.

The Intel installer works about as seamlessly as any that has ever been. You download the installer from [intel.com](https://www.intel.com). If you scroll down to about the middle of the Intel homepage you see will **Download Center**. Go there.

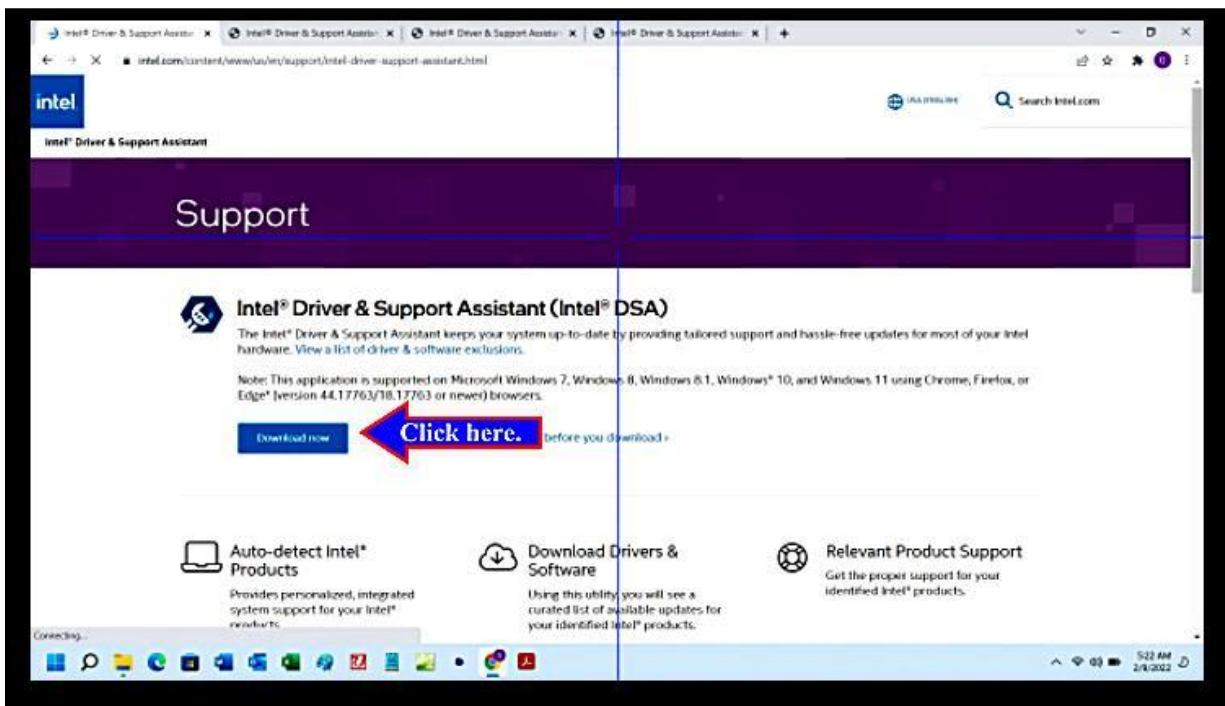
But before you begin your fantastic personal journey of driver and driver installation, please take the time to reflect the true wisdom of the **Fifth Beatitude of the Digerati**.



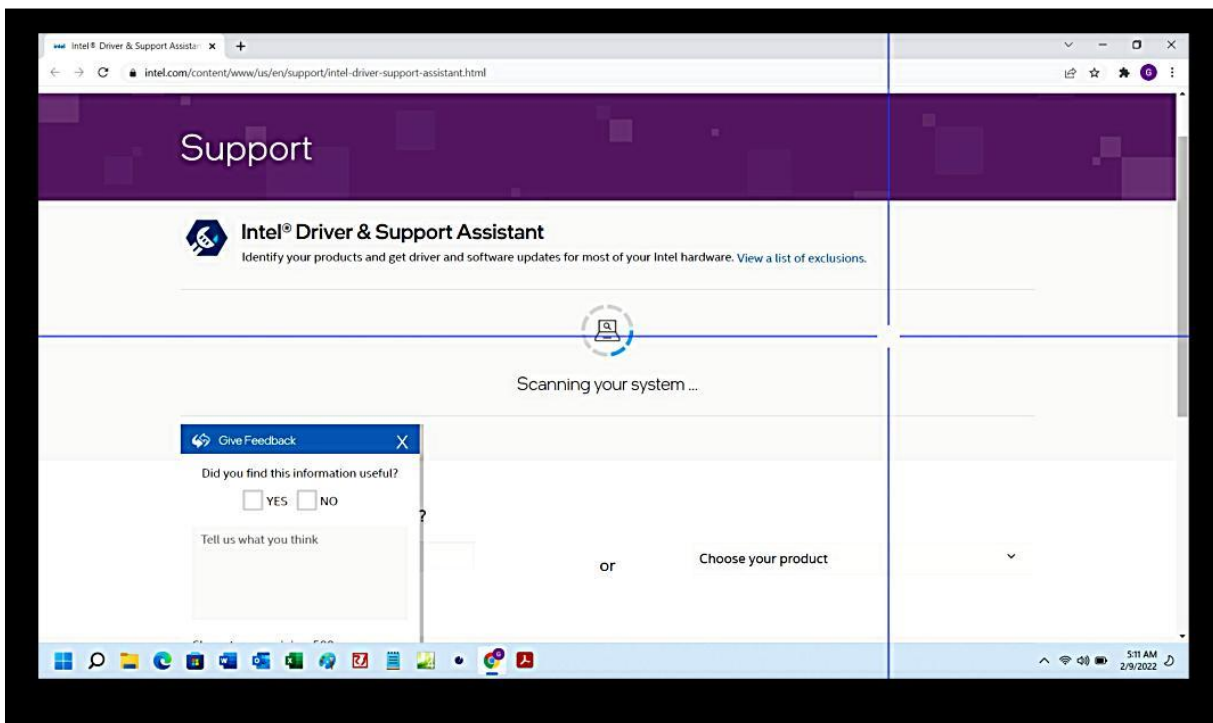
First, the website will ask you to begin the process which means installing the installer.



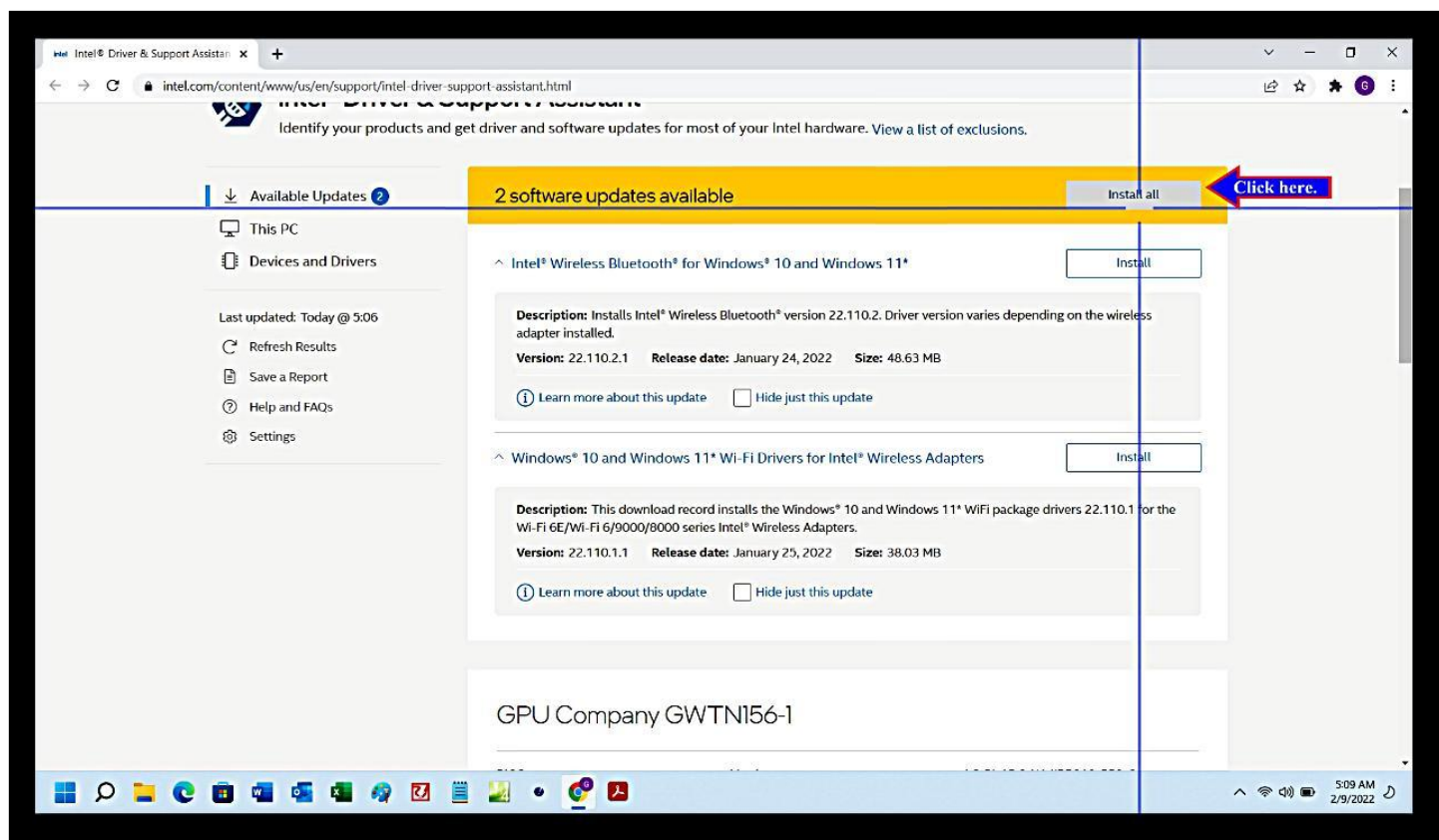
Next you will download and install the installer. Simply, click and let it work.



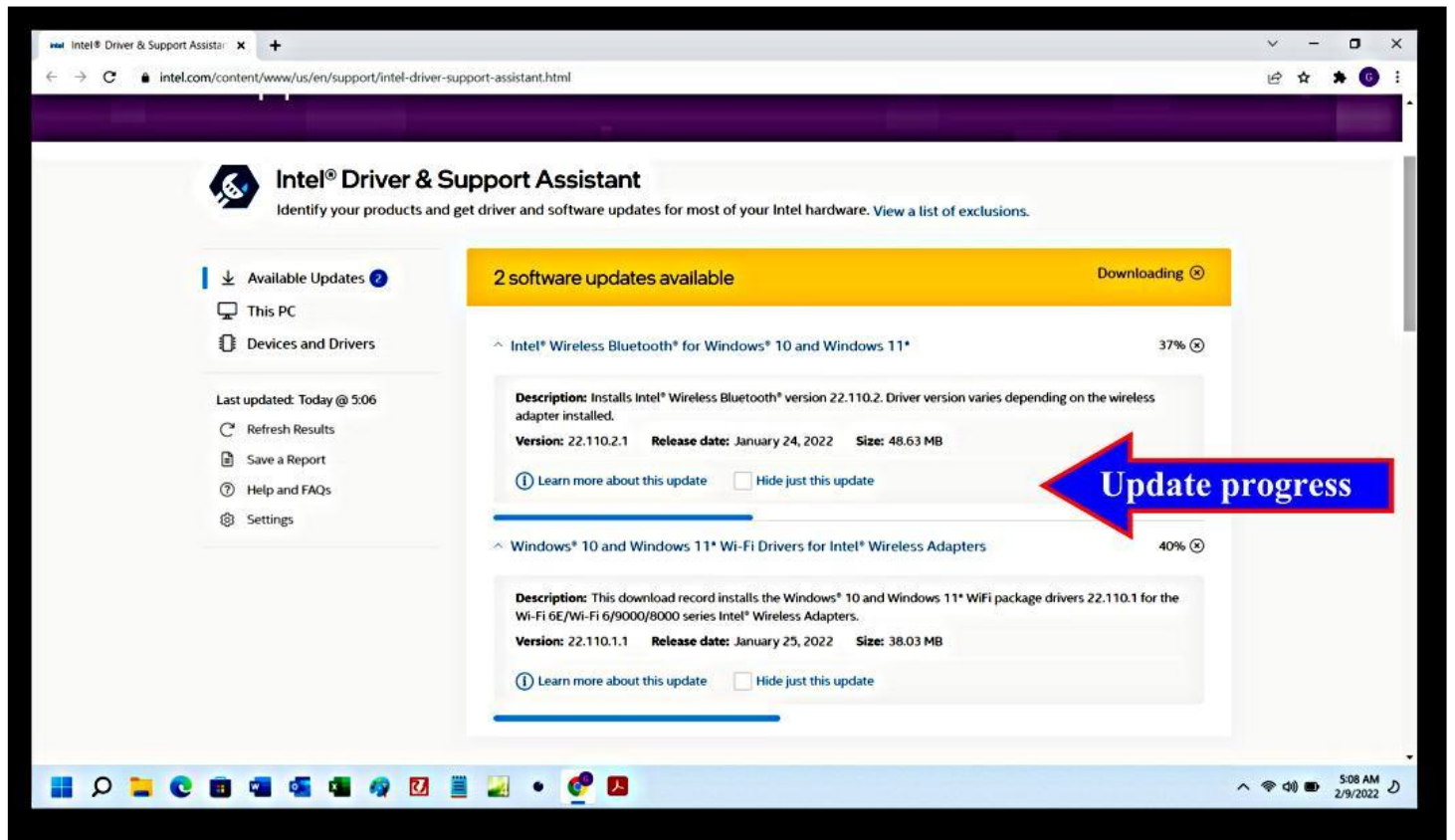
Once the installer is installed, you will be prompted to **RESTART**. After the machine restarts, you will be back now see the installer working and system scanning for drivers.



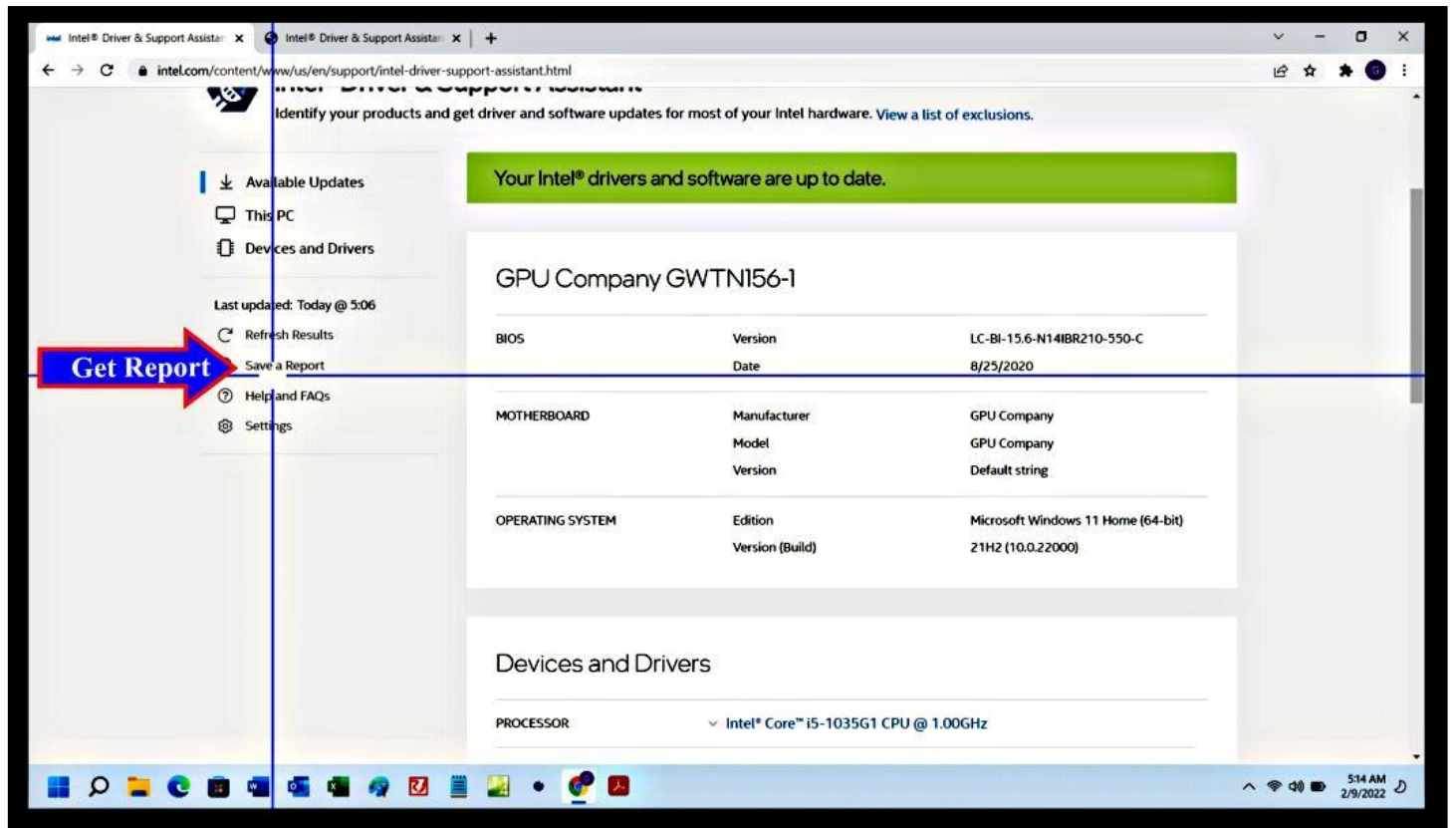
After the scan, you will be offered what new Intel drivers are available are available for your system. I was surprised to see two driver updates available. One was for the Bluetooth. And the other was the very important wireless adaptor. I run Windows Update daily. But there you are. I chose to install them both. That is the usual step to take, but if you see **BIOS UPDATE**, then I suggest that you choose each driver separately. You can decide later about a BIOS update.



After click install button all drivers selected will start the installation progress. The progress of the installations are represented by a blue progress bar.



Once the update are in installed, you can view and print a very detailed report about your system status. This could very helpful in any future troubleshooting.



I shouldn't have been surprised when, as I was in the middle of writing and creating this article, I noticed something I hadn't seen before.

Click to go to the the next post and experience: Intel Installer, The Sequel.

[Back to Top](#)

[← previous post](#)

[next post →](#)